



BY SUNNY BROWN

MEMORY VERSE OF THE MONTH: Psalm 119:105 (NIV)

Looking for memory verse sign language you can share with your families and volunteers?
Go to growcurriculum.org/Psalm119-105 and share away!

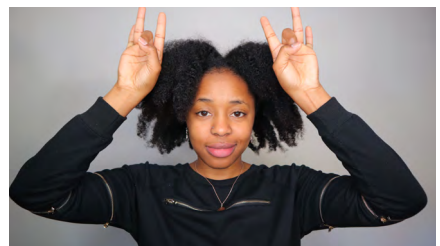
We all know that strategic hand motions help kids remember what they're learning, but what if you could accomplish *even more* than simply helping kids remember Scripture? Every Grow Kids memory verse is provided in age-appropriate signs, using a combination of SEE and ASL. Encouraging kids to learn each memory verse in this way will better **include kids and families impacted by hearing impairment**, and will **promote awareness and inclusion** for the rest of your kids and families!



YOUR



WORD



IS A LIGHT



FOR



MY



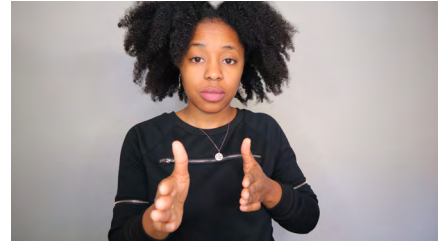
FEET,



A LIGHT ON



MY



PATH.

ABOUT THE AUTHOR

SUNNY BROWN



www.youthchurchmatters.com



facebook.com/YouthChurchMattersSunny



facebook.com/YouthChurchMatters



instagram.com/sunnyflowmusic



Sunny Brown is the Pastor of Haven Hill Church in Charlotte, North Carolina. She is a advocate for youth ministry and women in leadership – and sometimes for her favorite card game, Uno! Sunny is also passionate about helping others practice diversity and inclusion in their churches.

She and her husband Anthony Sr. have seven children – from preschool all the way through high school. When she’s in a car, she prefers to drive . . .

but she hates driving, so that’s a challenge. Sunny is also a big collector of t-shirts, so if you’d like to support her hobby, she wouldn’t turn down one of your ministry’s t-shirts. You might even catch her wearing it on a Facebook live stream from her page Youth Church Matters.

If you’d like to chat with Sunny about youth ministry training, diversity and inclusion, or deaf ministry, reach out! She would love to connect with you.

ADDITIONAL DEVELOPMENT: Linda Moon, Brooklyn Lindsey, Elle Campbell, Amber Stephens, Erica Mason.

GRAPHIC DESIGN: Josh Gosney, Jules Gray, Elle Campbell.

LAYOUT DESIGN: Jules Gray, Elle Campbell.

ADDITIONAL SUPPORT: Kenny Campbell, Tash McGill, Stephen Switzer, Ali Anne, Eddie Irvin, Ari Raines, Kellee Gentry, Tim Synan, Josh McLemore, Amber Gaddis.